

Jason Delgado
DESIGN

By: Jason Delgado

Graphic Design Portfolio

February 24th, 2019

jasondelgadodesign.com



TABLE OF CONTENTS

| | |
|-----------------------|-------|
| PRINT RESUME | 3 |
| PROFESSIONAL BRANDING | 4-6 |
| WEBSITES | 7-8 |
| DIGITAL BANNER | 9 |
| CAMPAING MATERIALS | 10 |
| EVACUATION MATERIALS | 11 |
| LOGO DESIGNS | 12 |
| MAGAZINES | 13-14 |
| TYPOGRAPHY | 15 |
| PHOTO STORY | 16-17 |
| POSTERS | 18-19 |
| MONUMENT | 20 |



PROFILE

JASON DELGADO

[HTTP://WWW.GEOCITIES.WS/BIODELGADO/INDEX.HTML](http://www.geocities.ws/biodelgado/index.html)

JASON.DELGADO@SNHU.EDU

I'M HIGHLY SKILLED IN MANAGEMENT, GRAPHIC DESIGN, PROGRAMING SECURITY EQUIPMENT, AND EXECUTIVE DETAIL SUPPORT

EXPERIENCE

FIDELITY INVESTMENTS

2007-CURRENT

SECURITY MANAGER

HEAD OF SECURITY FOR TEXAS REGION
WEB-TECH TEAM MANAGER
INTERNAL INVESTIGATIONS

DCS ADVERTISING

2004-2007

PRODUCTION MANAGER

GRAPHIC DESIGNER
EVENT COORDINATOR
CUSTOMER SUPPORT

EDUCATION

STUDYING GRAPHIC DESIGN (SNHU)
EMT - B (2020), CPR INSTRUCTOR (ARC)
HIGHSCHOOL (PESH 2000)

PROFESSIONAL BRANDING

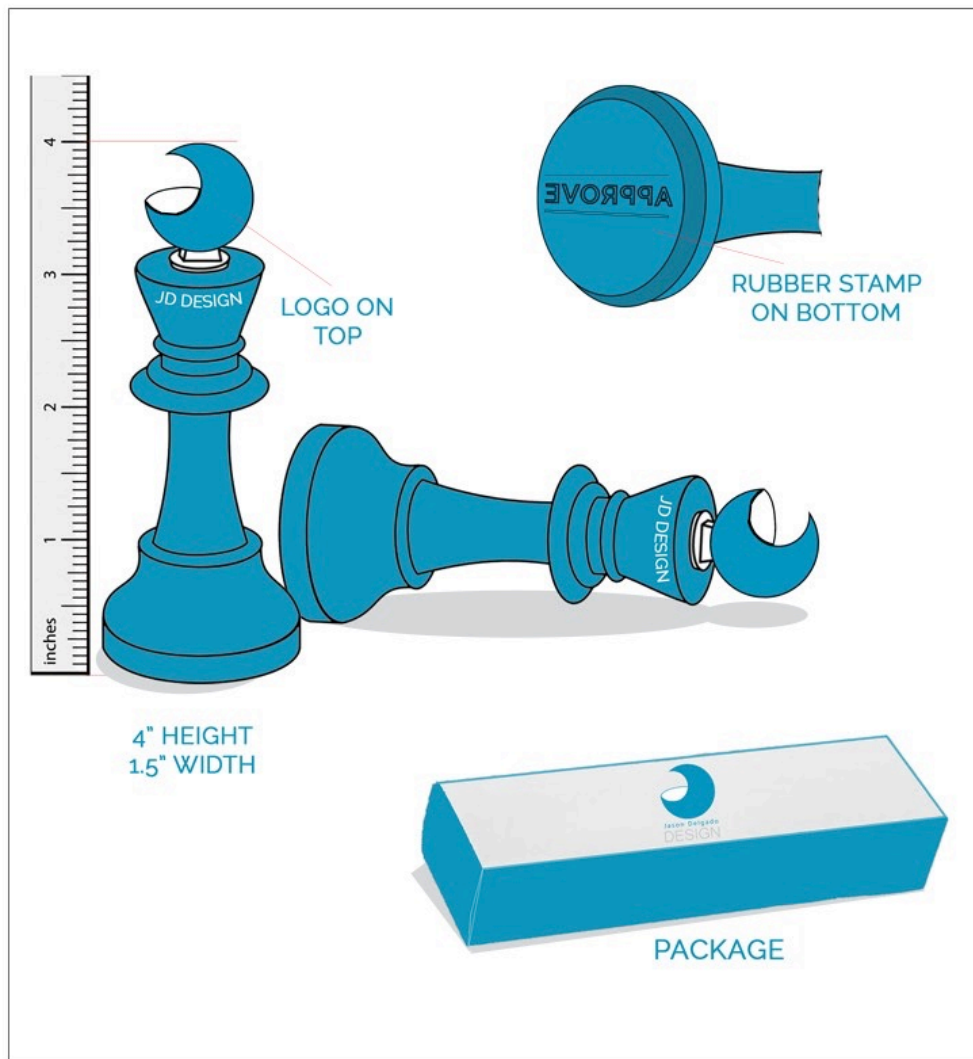
Business Card



Letterhead & Envelope



Leave Behind Piece





GLOBAL SECURITY & INVESTIGATIONS

Home [Education & Awareness](#) [Financial Intelligence Unit](#) [Global Security Operations](#) [Internal Investigations](#)
[Travel Security](#) [Vetting & Backgrounds](#)



Global Security & Investigations

Welcome to the Global Security and Investigations webpage. Our mission is to Protect Fidelity's assets: our reputation, our people, our clients and our vital business information, processes and facilities. We add value through the development and delivery of cost-beneficial asset protection programs. It's important to proactively focus on identification & mitigation of risk for Fidelity Investments. Lastly, we conduct business in a manner that demonstrates the highest ethical standards. Please feel free to review our services and operations. We are here to help with all security related matters.

Most Common Associate Requests

- [Badging and Access](#)
- [Due Diligence Intake Form](#)
- [Office Key Request](#)
- [Fingerprint Appointment](#)
- [Pre-Register Visitors](#)
- [Internal Investigations Intake Form](#)
- [Keyword Search](#)

Security Services

[Report an issue](#)

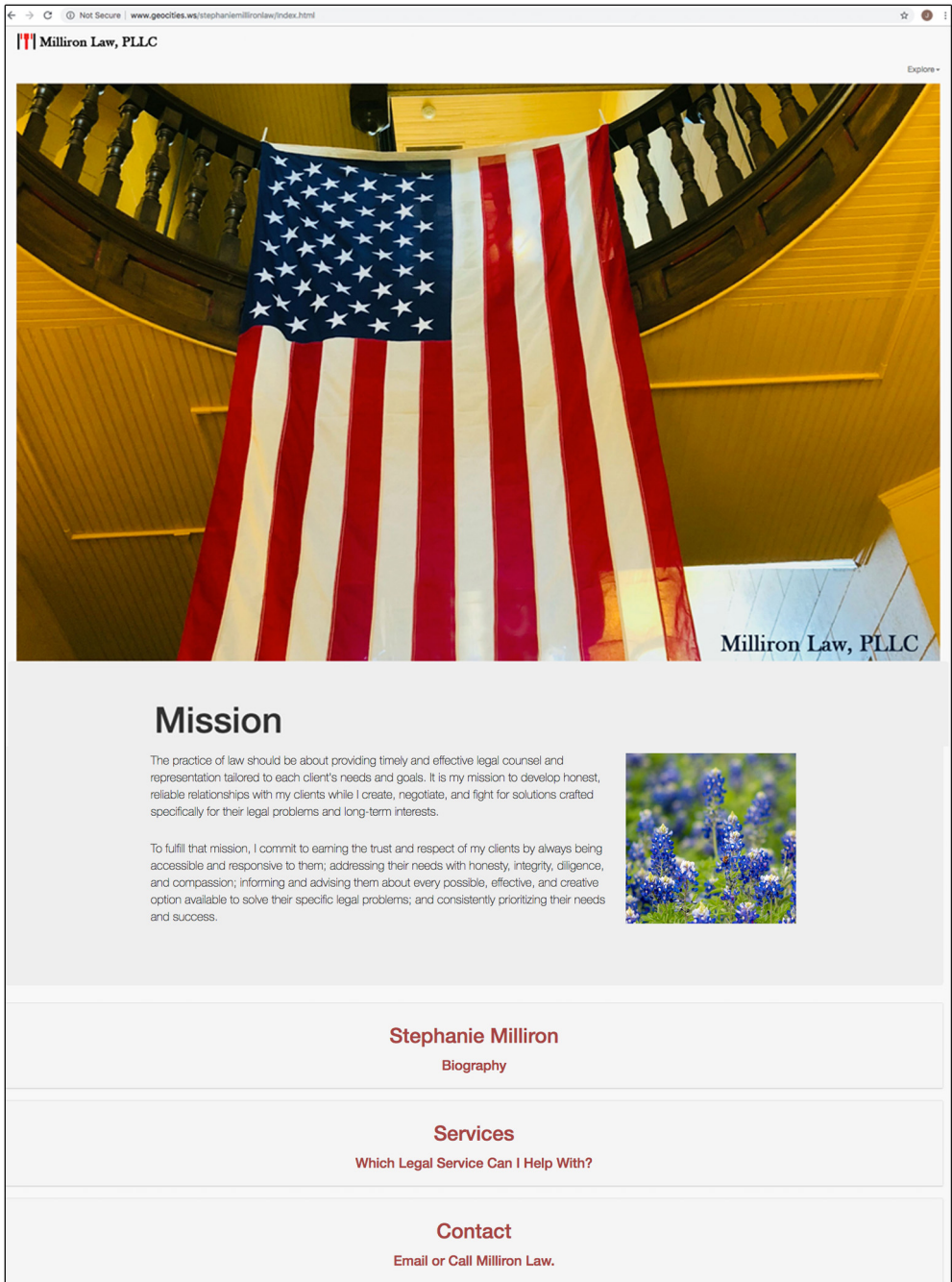


Chairman's Line

Contact the Chairman's Line to anonymously report employee misconduct, policy violations, and unethical activity.

[Find out more on ChairmansLine.fmr.com](http://ChairmansLine.fmr.com)

The GSI Website above is an internal company website posted for employees to retrieve information regarding life safety.



Milliron Law Firm website is a very simple example and mainly utilized on mobile device. Many of the clients do not have the money for computers.

DIGITAL BANNER



Animated digital banner example. The banner is simple. It delivers the message and has an eye catching beach scene. The font and texture of the letters in the banner contrast well

CAMPAIGN MATERIAL



Posters



Custom Photos



Contact your local security office for details

Hardcards

Download App

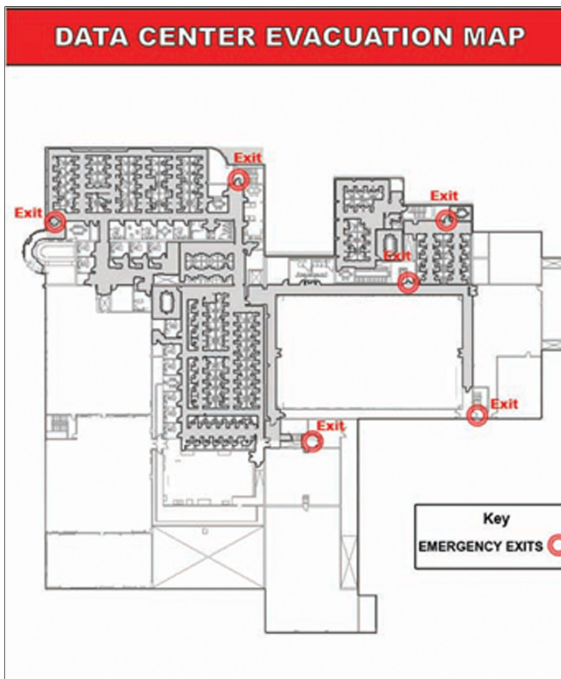
- DOWNLOAD**
Search for and download "LiveSafe" from the Apple or Google Play app store. Open LiveSafe on your device.
- SIGN UP AND VERIFY YOUR ACCOUNT**
Register using your mobile phone number. Follow the verification instructions (you will receive a code via SMS text to the phone number entered). Once verified, create your LiveSafe profile. Tap "next".
- SELECT YOUR FIDELITY ORGANIZATION**
Search for and select your Fidelity region or investor center.
- ENTER YOUR CORP ID AND FIDELITY.COM EMAIL ADDRESS AND AUTHENTICATE YOUR ACCOUNT**
Enter your CORP ID email address. Next, LiveSafe will send an email to your Fidelity account asking for authentication. You'll know you are in the correct organization when you see the Fidelity logo at the top of the app home screen.
- ALLOW LOCATION SHARING**
Allow location sharing to receive emergency alerts relevant to your location. Safety officials can only track your location when you request help through one of the Emergency Options within LiveSafe. While the LiveSafe app is running in the background, it will consume approximately 1% of your battery per day.

Campaign Material rolled out to employee population to create awareness. I was in charge of building posters and hard cards that match the mobile app.

EVACUATION MATERIAL



Evacuation Map



Wallet Cards

FIRE SYSTEMS

BUILDING ONE
Entire wing evacuates

BUILDING TWO
Floor above & below alarm evacuates

Incoming Phone Calls

"I can hear the fire alarm and see employees exiting the building. Do I need to evacuate my floor?"
-Employee Question

"If you can hear the audible alarm and see the flashing strobes on your floor then you need to evacuate."
-Security Reply

Material used to protect employees and educate them on life safety. Getting employees out of the building is important so they go home to their families everyday.



Logos are a good way to show potential clients that I have experience branding companies. The example below is part of a client review presentation.



Travel Magazine

Where do you want to go?

Travel Tips
Airline Booking
Travel Agents
Hotel Reviews
Rental Cars
Luggage Reviews

Travel Safety Tips

- Locking up Passport
- Emergency Contacts
- Hospitals
- Travel Apps
- Food

10 BEST PLACES TO
TRAVEL THIS YEAR
Utah
Las Vegas
Dallas
Seattle
China
More details inside...



Travel magazine cover



ARE THE PLANETS INHABITED?

BY
E. WALTER MAUNDER, F.R.A.S.
SUPERINTENDENT OF THE SOLAR DEPARTMENT, ROYAL OBSERVATORY GREENWICH

The first thought that men had concerning the heavenly bodies was an obvious one: they were lights. There was a greater light to rule the day; a lesser light to rule the night; and there were the stars also.

In those days there seemed an immense difference between the earth upon which men stood, and the bright objects that shone down upon it from the heavens above. The earth seemed to be vast, dark, and motionless; the celestial lights seemed to be small, and moved, and shone. The earth was then regarded as the fixed centre of the universe, but the Copernican theory has since deprived it of this pride of place. Yet from another point of view the new conception of its position involves a promotion, since the earth itself is now regarded as a heavenly body of the same order as some of those which shine down upon us. It is [Pg 2] amongst them, and it too moves and shines—shines, as some of them do, by reflecting the light of the sun. Could we transport

But as men realized this, they began to ask: "Since this world from a distant standpoint must appear as a star, would not a star, if we could get near enough to it, show itself also as a world? This world teems with life; above all, it is the home of human life. Men and women, gifted with feeling, intelligence, and character, look upward from its surface and watch the shining members of the heavenly host. Are none of these the home of beings gifted with like powers, who watch in their turn the movements of that shining point which is our world?"

This is the meaning of the controversy on the Plurality of Worlds which excited so much interest some sixty years ago, and has been with us more or less ever since. It is the desire to recognize the presence in the orbs around us of beings like ourselves,

possessed of personality and intelligence, lodged in an organic body. This is what is meant when we speak of a world being "inhabited." It would not, for example, at all content us if we could ascertain that Jupiter was covered by a shoreless ocean, rich in every variety of fish; or that the hard rocks of the Moon were delicately veiled by lichens. Just as no richness [Pg 3] of vegetation and no fulness and complexity of animal life would justify an explorer in describing some land that he had discovered as being "inhabited" if no men were there, so we cannot rightly speak of any other world as being "inhabited" if it is not the home of intelligent life. If the life did not rise above the level of algae or oysters, the globe on which they flourish would be uninhabited in our estimation, and its chief interest would lie in the possibility that in the course of ages life might change its forms and develop hereafter into manifestations with which we could claim a nearer kinship.

CONTROVERSY

On the other hand, of necessity we are precluded from extending our enquiry to the case of disembodied intelligences, if such be conceived possible. All created existences must be conditioned, but if we have no knowledge of what those conditions may be, or means for attaining such knowledge, we cannot discuss them. Nothing can be affirmed, nothing denied, concerning the possibility of intelligences existing on the Moon or even in the Sun if we are unable to ascertain under what limitations those particular intelligences subsist. Gnomes, sylphs, elves, and fairies, and all similar conceptions, escape the possibility of discussion by our ignorance of their properties. As nothing can be asserted of them they remain beyond investigation, as they are beyond sight and touch.

[Pg 4] The only beings, then, the presence of which would justify us in regarding another world as "inhabited" are such as would justify us in applying that term to a part of our own world. They must possess intelligence and consciousness on the one hand; on the other, they must likewise have corporeal form. True, the form might be imagined as different from that we possess; but, as with ourselves, the intelligent spirit must be lodged in and expressed by a living material body. Our enquiry is thus rendered a physical one; it is the necessities of the living body that must guide us in it; a world unsuited for living organisms is not, in the sense of this enquiry, a "habitable" world.

The discussion, as it was carried on sixty years ago by Dr. Whewell and Sir David Brewster, was essentially a metaphysical, almost a theological one, and it was chiefly considered in its supposed relationship to certain religious conceptions. It was urged that it was derogatory to the wisdom and goodness of the Creator to suppose that He would have created so many great and glorious orbs without having a definite purpose in so doing, and that the only purpose for which a world could be made was that it might be inhabited. So, again, when Dr. A. R. Wallace revived the discussion in 1903, he clearly had a theological purpose in his opening paper, though he was taking the opposite view from that held by Brewster half a century earlier.

RELIGION

For myself, if there be any theological significance attaching to the solving of this problem, I do not know what it is. If we decide that there are very many inhabited worlds, or that there are few, or that there is but one—our own—I fail to see how it should modify our religious beliefs. For example:

Science Magazine Spread shows structure, balance and ability to design article layouts.



The theme is Alfred Hitchcock and the images were built using "Wicked Scary Font". The font is edge and reflects horror films.

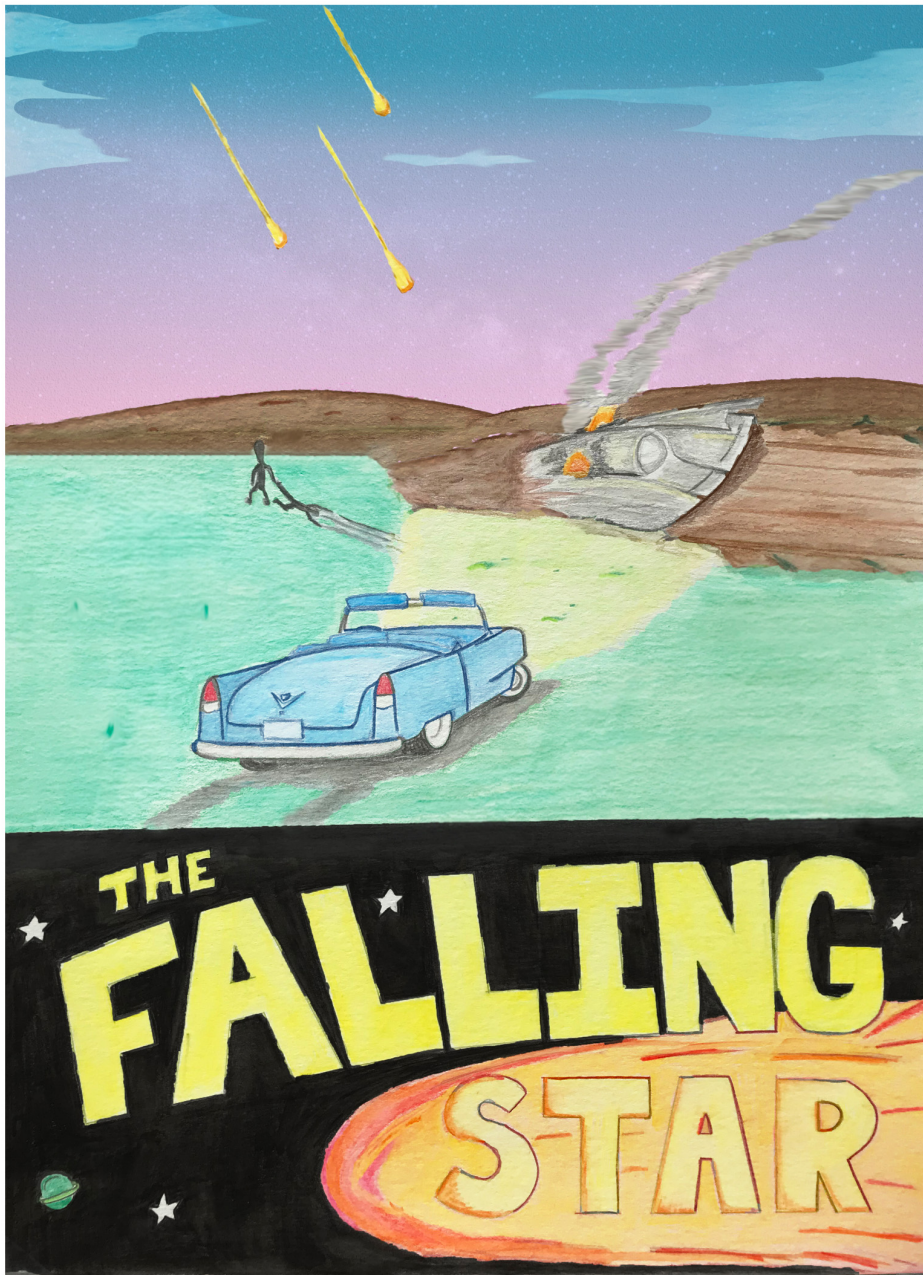
PHOTO STORY



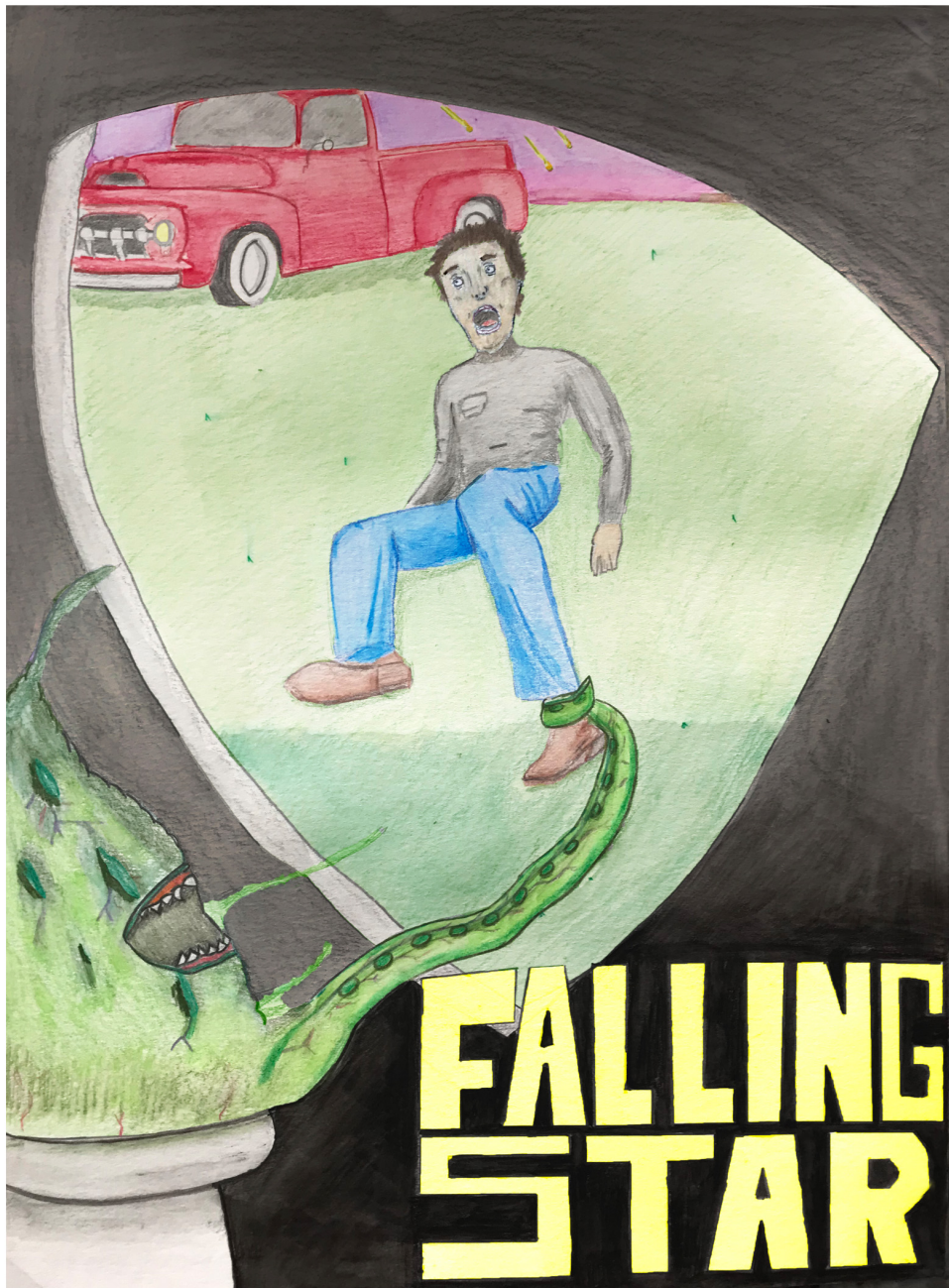
The photography story depicts a ride through the small town of Grapevine, TX. The themes of the pictures are rustic, industrial and vintage. Photos show motion, profile, and landscape. (Continue story on page 17)

PHOTO STORY





WATERCOLOR



WATERCOLOR

MONUMENT

FIRST RESPONDER MONUMENT

126 E. Nueva Street

